

2022
SPRING

NEW
RELEASES

Makita

XGT

BEYOND LIMITS

40V | 80V max



A NEW SYSTEM OF EQUIPMENT & TOOLS



OVER 100 YEARS OF INNOVATION

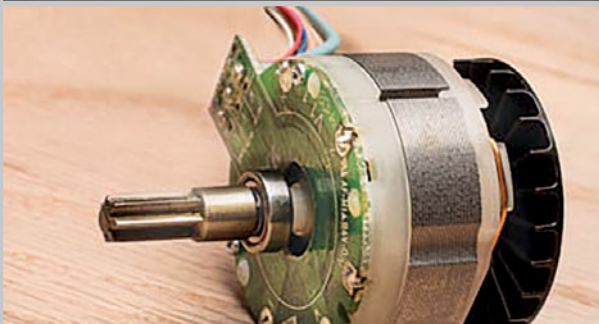
Makita Corporation was founded in 1915 as an electric motor sales and repair company. Today, as a global brand in over 40 countries, Makita is an innovation leader, manufacturing best-in-class products at 10 plants operating in 8 countries.



1978 Introduced the first cordless tool



2005 Created 18V LXT® Lithium-Ion System



2009 Introduced the industry's first 18V brushless motor impact driver



2012 Released the first cordless tool powered by two 18V lithium-ion batteries

CORDLESS SOLUTIONS

NEW



40V_{max}



80V_{max}



**100
PRODUCTS***
ONE SYSTEM



MAXIMUM PERFORMANCE

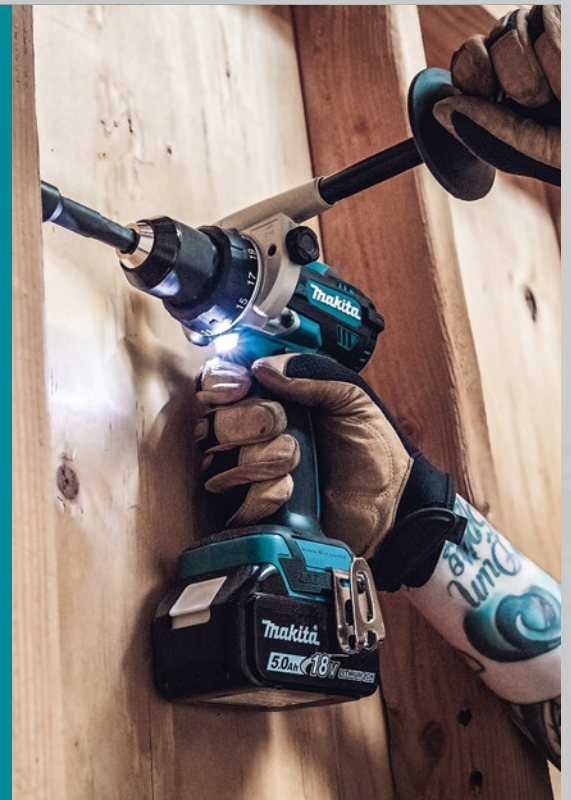
18V



36V



**300+
PRODUCTS***
ONE SYSTEM



PRECISE HANDLING

12V_{max}



70+ PRODUCTS*
ONE SYSTEM



*In 2022



BEYOND LIMITS



OUTPOWER



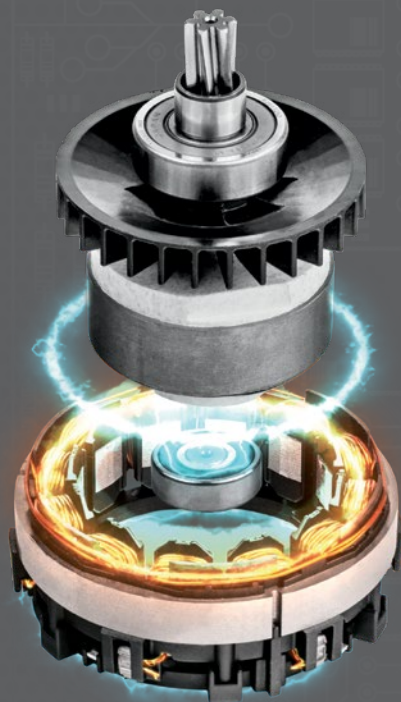
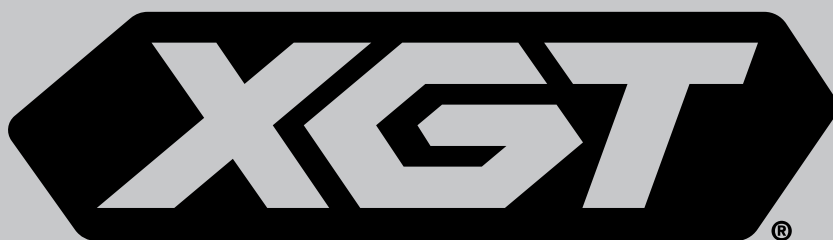
OUTSMART



OUTLAST



XGT® is a new 40V | 80V max system of cordless equipment and tools. XGT® outpowers, outsmarts, and outlasts the rest. Through Makita's innovative engineering, the technology within the XGT® system will create the equipment and tools of the future.



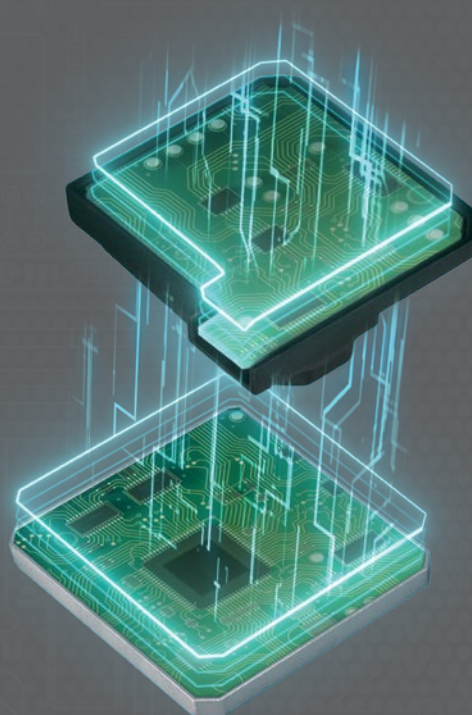
OUTPOWER

PURE COPPER WIRE

Makita® XGT® Products feature purpose-built brushless motors with more copper windings for increased power output.

RARE EARTH MAGNETS

Rare earth magnets of the highest quality are engineered within the brushless motors to maximize power and performance.



OUTSMART

BUILT-IN MICROCHIPS

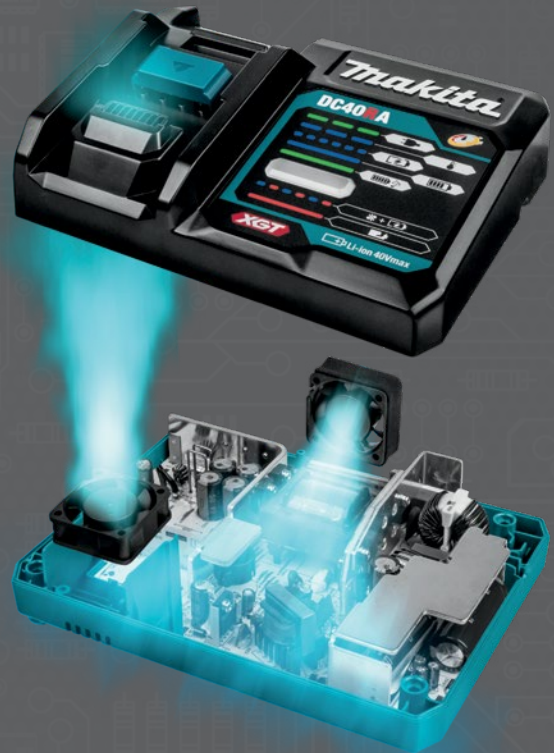
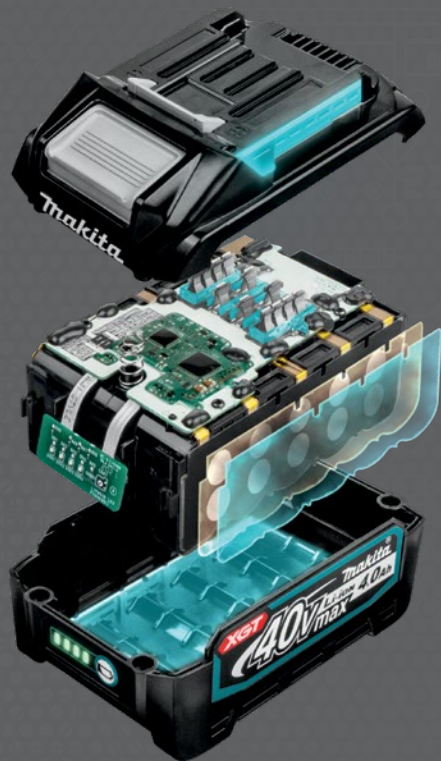
Built-in microchips in both tool and battery allow for real-time digital communication, actively monitoring heat, overload, and over-discharge.

DIGITAL COMMUNICATION

Digital communication between XGT® Tools and Batteries through enhanced digital communication technology optimize performance to deliver up to 2X longer sustained power during demanding applications.

BEYOND LIMITS

Learn More at makitatools.com/XGT



OUTLAST

IMPACT ABSORBENT STRUCTURE

Durable outer casing and cell holder create space within the battery to absorb impact.

WATER & DUST RESISTANCE

Water and dust-resistant triple layer structure and an enhanced terminal structure are engineered to protect against water and dust for any job site condition.

MULTI-LAYER SURFACE CONTACTS

Multi-layer surface contacts within tool and battery are designed to take on high current demands.

RAPID OPTIMUM CHARGING SYSTEM

XGT® Charger and Dual Cooling Fans digitally communicates before and during the charging process, evaluating battery condition to deliver a consistent fast charge. Charges LXT® batteries with adapter.



40V | 80V max

Learn More at
makitatools.com/XGT

1-1/8" D-HANDLE ROTARY HAMMER

UP TO **23% FASTER**
DRILLING PERFORMANCE



GRH07M1W Shown



GRH01M1W Shown



Also Available:
Dust Extractor Attachment with HEPA
Filter Cleaning Mechanism (DX14)



GRH07M1 / GRH07Z / GRH07M1W / GRH07ZW

**40V max XGT® Brushless 1-1/8" AVT®
(D-Handle) Rotary Hammer Kit, SDS-PLUS**

- Makita-built brushless motor delivers up to 23% faster drilling performance
- Up to 38% more holes per charge with XGT® 4.0Ah Battery
- Anti-Vibration Technology (AVT®) is designed to reduce vibration for increased comfort
- Active Feedback-Sensing Technology (AFT®) electronically turns off the motor if rotation of bit is suddenly forced to stop

GRH07M1W / GRH07ZW include Dust Extractor Attachment
with HEPA Filter Cleaning Mechanism (DX15)



GRH01M1 / GRH01Z / GRH01M1W / GRH01ZW

**40V max XGT® Brushless
1-1/8" AVT® Rotary Hammer Kit, SDS-PLUS**

- Makita-built brushless motor delivers the power performance required for heavy-load application
- Up to 135 of 3/8" holes using a fully charged 40V XGT® 4.0Ah battery
- Anti-Vibration Technology (AVT®) is an internal counterbalance system along with vibration-absorbing handles that work together to reduce vibration
- Active Feedback-Sensing Technology (AFT®) electronically turns off the motor if rotation of bit is suddenly forced to stop

GRH01M1W / GRH01ZW include Dust Extractor Attachment
with HEPA Filter Cleaning Mechanism (DX12)



GRH02M1 / GRH02Z

**40V max XGT® Brushless 1-1/8" AVT®
Rotary Hammer Kit, SDS-PLUS, with Interchangeable Chuck**

- Makita-built brushless motor delivers the power performance required for heavy-load application
- Up to 135 of 3/8" holes using a fully charged 40V XGT® 4.0Ah battery
- Anti-Vibration Technology (AVT®) is an internal counterbalance system along with vibration-absorbing handles that work together to reduce vibration
- Active Feedback-Sensing Technology (AFT®) electronically turns off the motor if rotation of bit is suddenly forced to stop
- Quick change chuck allows for interchangeability from SDS-PLUS to 1/2" keyless chuck for utilization of straight shank bits



Also Available:
Dust Extraction Attachment Kit, SDS-MAX,
Drilling and Demolition (196537-4)



GRH05M1 / GRH05Z

40V max XGT® Brushless
1-9/16" AVT® Rotary Hammer Kit, SDS-MAX

- Makita-built brushless motor along with 40V max XGT® Battery combine to deliver the power performance required for heavy-load application
- Active Feedback-Sensing Technology (AFT®) electronically turns off the motor if rotation of bit is suddenly forced to stop
- Extreme Protection Technology (XPT™) is engineered for improved dust and water resistance for operation in harsh conditions



Also Available:
Dust Extraction Attachment Kit, SDS-MAX,
Drilling and Demolition (196558-4)



GRH06PM / GRH06Z

80V max (40V max X2) XGT® Brushless
2" AVT® Rotary Hammer Kit, SDS-MAX

- Makita-built brushless motor along with two 40V max XGT® batteries combine to deliver up to 27% faster drilling performance than corded equivalent model
- Active Feedback-Sensing Technology (AFT®) electronically turns off the motor if rotation of bit is suddenly forced to stop
- Anti-Vibration Technology (AVT®) is an internal counterbalance system along with vibration-absorbing handles that work together to reduce vibration



Also Available:
Dust Extraction Attachment,
SDS-MAX, Demolition (196571-4)



GMH01M1 / GMH01Z

40V max XGT® Brushless
15 lb. AVT® Demolition Hammer Kit, SDS-MAX

- Makita-built brushless motor along with two 40V max XGT® Batteries combine to deliver up to 20% faster breaking efficiency than corded equivalent model
- Constant speed control automatically applies additional power under load for optimum performance
- Extreme Protection Technology (XPT™) is engineered for improved dust and water resistance for operation in harsh conditions



Also Available:
Dust Extraction Attachment,
SDS-MAX, Demolition (196571-4)



GMH02PM / GMH02Z

80V max (40V max X2) XGT® Brushless
28 lb. AVT® Demolition Hammer Kit, SDS-MAX

- Makita-built brushless motor along with two 40V max XGT® Batteries combine to deliver up to 15% faster breaking efficiency than corded equivalent model
- Constant speed control automatically applies additional power under load for optimum performance
- Anti-Vibration Technology (AVT®) is an internal counterbalance system along with vibration-absorbing handles that work together to reduce vibration

ROTARY CARBIDE



SDS-PLUS 3-Cutter Drill Bit



SDS-PLUS 2-Cutter Drill Bit



SDS-MAX 6-Cutter Drill Bit



SDS-MAX Dust Extraction Drill Bit

DEMOLITION STEEL



751624-A // 4-1/2" x 17" Clay Spade, SDS-MAX



751228-A // 1" x 12" Flat Chisel, SDS-MAX



D-36522 // 3" x 12" Scaling Chisel, General Purpose, SDS-MAX



D-51150 // 3/4" x 10" Cold Chisel, SDS-PLUS



D-51144 // 10" Bull Point, SDS-PLUS



A-68161 // 4" Floor Scraper Blade and Assembly, SDS-PLUS

COMING SOON



GECO1PL / GECO1PL4 / GECO1Z

80V max (40V max X2) XGT® Brushless 14" Power Cutter Kit

GECO1PL4 includes (4) XGT® 8.0Ah Batteries



GRH08M1 / GRH08Z GRH08M1W / GRH08ZW

40V max XGT® Brushless
1-3/16" Rotary Hammer Kit



GRH09M1 / GRH09Z

40V max XGT® Brushless
1-3/16" Rotary Hammer Kit with QC Chuck



GRV01M1 / GRV01Z

40V max XGT® Brushless
5.6' Concrete Vibrator 1-1/4" Kit



GRV02M1 / GRV02Z

40V max XGT® Brushless
8' Concrete Vibrator 1-1/2" Kit



40V | 80V max

Learn More at
makitatools.com/XGT



ORBITAL RECIPRO SAW POWER OF A 15 AMP CORDED SAW

NEW SPRING RELEASE



GRJ01M1 / GRJ01Z

**40V max XGT® Brushless
Reciprocating Saw Kit**

- Makita-built brushless motor delivers up to 35% faster cutting speed; 0-2,300 (Low) and 0-3,000 (High) strokes per minute
- The digital communication within XGT® optimizes performance to provide up to 2X longer sustained power under heavy-load applications
- Self-lubricating slider for increased durability



GRJ02M1 / GRJ02Z

**40V max XGT® Brushless
AVT® Orbital Reciprocating Saw**

- Delivers the Power of a 15 AMP Corded Reciprocating Saw
- Makita-built brushless motor delivers up to 40% faster cutting speed
- Anti-Vibration Technology (AVT®) is an internal counterbalance system delivers up to 50% less vibration
- On/Off Orbital feature provides more aggressive cuts in wood

**GSR02M1 / GSR02Z**

**40V max XGT® Brushless
10-1/4" Rear Handle Saw Kit**

- Makita-built brushless motor delivers 4,000 RPM for up to 2X faster cutting than corded
- Extra Large 3-3/4" cutting capacity at 90°; cuts 4X material in a single pass
- Up to 150 cuts per charge in 4x4 SPF lumber on a single charge of a 4.0Ah battery
- Ergonomic design at only 13.3 lbs. up to 3.2 lbs. lighter than corded

**GSR01M1 / GSR01Z**

**40V max XGT® Brushless
7-1/4" Rear Handle Saw Kit**

- Makita-built brushless motor delivers 6,400 RPM for faster cutting performance
- Large 2-9/16" cutting capacity at 90°; cuts 3X material in a single pass
- Up to 375 cuts per charge in 2x4 SPF lumber on a single charge of a 4.0Ah battery
- Improved ergonomic design at only 11.7 lbs. up to 1.5 lbs. less than corded

**GSH01M1 / GSH01Z**

**40V max XGT® Brushless
7-1/4" Circular Saw Top Handle Kit**

- Makita-built brushless motor delivers 6,000 RPM for faster cutting performance
- Large 2-5/8" cutting capacity at 90°
- Dual L.E.D. lights illuminate the work area
- Compact and ergonomic design at only 12-1/2" long

NEW SPRING RELEASE**GSH02M1 / GSH02Z**

**40V max XGT® Brushless 7-1/4" Circular Saw Kit,
with Guide Rail Compatible Base, AWS®**

- Makita-built brushless motor delivers 6,000 RPM for faster cutting performance
- Large 2-3/8" cutting capacity at 90°
- Dual L.E.D. lights illuminate the work area
- Convenient guide rail compatible saw base interacts with optional guide rails to provide perfect, dead-on straight or bevel cutting without the need for an adapter

**GSH03Z**

**40V max XGT® Brushless 9-1/4" Circular Saw,
with Guide Rail Compatible Base**

- Makita-built brushless motor delivers 4,000 RPM for faster cutting performance
- Large 3-3/8" cutting capacity at 90°
- Dual L.E.D. lights illuminate the work area
- Compact and ergonomic design at only 16-1/4" long

**GSH04Z**

**40V max XGT® Brushless 10-1/4" Circular Saw,
with Guide Rail Compatible Base**

- Makita-built brushless motor delivers 3,500 RPM for faster cutting performance
- Large 3-13/16" cutting capacity at 90°
- Dual L.E.D. lights illuminate the work area
- Compact and ergonomic design at only 17-7/8" long

**GSL02M1 / GSL02Z**

**40V max XGT® Brushless
8-1/2" Dual-Bevel Sliding Compound Miter Saw Kit**

- Makita-built brushless motor delivers 4,800 RPM for faster cutting performance
- Cutting capacity of 2-3/4" x 12-1/4" at 90°
- Miters 0-60° left and right, Bevels 0-48° left and right, with positive stops at 0°, 15°, 22.5°, 30°, 31.6°, 45°, and 60° left and right

**GSL03M1 / GSL03Z**

**40V max XGT® Brushless
10" Dual-Bevel Sliding Compound Miter Saw Kit**

- Makita-built brushless motor delivers 3,600 RPM for faster cutting performance
- Large 2-13/16" x 12" cutting capacity at 90°; cuts up to 6-5/8" crown molding (vertically nested) and 5-1/4" baseboard (vertical)
- Miters 0-60° left and right, Bevels 0-48° left and right, with positive stops at 0°, 15°, 22.5°, 30°, 31.6°, 45°, and 60° left and right

**GSL04M1 / GSL04Z**

**40V max XGT® Brushless
12" Dual-Bevel Sliding Compound Miter Saw Kit**

- Makita-built brushless motor delivers 3,600 RPM for faster cutting performance
- Extra large 3-5/8" x 15" cutting capacity at 90°; cuts up to 8" crown molding (vertically nested) and 6-3/4" baseboard (vertical)
- Miters 0-60° left and right, Bevels 0-48° left and right, with positive stops at 0°, 15°, 22.5°, 30°, 31.6°, 45°, and 60° left and right

**GPS01M1J / GPS01Z**

**40V max XGT® Brushless
6-1/2" Plunge Circular Saw Kit**

- Makita-built brushless motor with variable speed control dial (2,500 - 4,900 RPM) for faster cutting performance
- Cutting capacity 2-3/16" at 90°; and 1-9/16" at 45°
- Bevel capability (-1° to 48°) with positive stops at 22.5° and 45°

GUIDE RAILS & CLAMP

COMPATIBLE WITH XGT® PLUNGE SAW

199140-0 // 39" Guide Rail

194368-5 // 55" Guide Rail

194367-7 // 118" Guide Rail

194385-5 // Guide Rail Clamp, 2/pk

Learn More at
makitatools.com/XGT



4-1/2" / 5" ANGLE GRINDERS

13 AMP CORDED
POWER



Also Available:
45° Clip-On Cut-Off Wheel
Guard Cover (199710-5)



GAG01M1 / GAG01Z

**40V max XGT® Brushless 4-1/2" / 5"
Angle Grinder Kit, with Electric Brake**

- Makita-built brushless motor along with 40V max XGT® Battery combine to deliver up to 60% faster cutting speed than predecessor models
- Electronic current limiter helps protect the motor from overload in high torque application
- Active Feedback-sensing Technology (AFT®) turns the motor off if rotation of the wheel is suddenly forced to stop
- Electric brake stops the grinding or cut-off wheel in 2 seconds or less for maximum productivity



Also Available:
45° Clip-On Cut-Off Wheel
Guard Cover (199710-5)



GAG03M1 / GAG03Z

**40V max XGT® Brushless 4-1/2" / 5" Paddle
Switch Angle Grinder Kit, with Electric Brake**

- Makita-built brushless motor along with 40V max XGT® Battery combine to deliver up to 60% faster cutting speed than predecessor models
- Electronic current limiter helps protect the motor from overload in high torque application
- Active Feedback-sensing Technology (AFT®) turns the motor off if rotation of the wheel is suddenly forced to stop
- Electric brake stops the grinding or cut-off wheel in 2 seconds or less for maximum productivity



Also Available:
4-1/2" / 5" Tool-Less Dust Extraction Surface Grinding Shroud (191F81-2)
5" Tool-Less Dust Extraction Cutting/Tuck Point Guard (191G06-2)



GAG04M1 / GAG04Z

**40V max XGT® Brushless 4-1/2" / 5"
Angle Grinder Kit, with Electric Brake**

- Makita-built brushless motor along with 40V max XGT® Battery combine to deliver up to 60% faster cutting speed than predecessor models
- Auto-start Wireless System (AWS™) utilizes Bluetooth® technology for wireless power-on/off communication between tool and dust extractor (AWS® Transmitter sold separately)
- Electronic current limiter helps protect the motor from overload in high torque application
- Variable speed control dial allows for RPM adjustment (3,000-8,500) to match the speed to the application



Also Available:
4-1/2" / 5" Tool-Less Dust Extraction Surface Grinding Shroud (191F81-2)
5" Tool-Less Dust Extraction Cutting/Tuck Point Guard (191G06-2)



GAG06M1 / GAG06Z

**40V max XGT® Brushless 4-1/2" / 5" Paddle
Switch Angle Grinder Kit, with Electric Brake**

- Makita-built brushless motor along with 40V max XGT® Battery combine to deliver up to 60% faster cutting speed than predecessor models
- Auto-start Wireless System (AWS™) utilizes Bluetooth® technology for wireless power-on/off communication between tool and dust extractor (AWS® Transmitter sold separately)
- Electronic current limiter helps protect the motor from overload in high torque application
- Variable speed control dial allows for RPM adjustment (3,000-8,500) to match the speed to the application

**GAG07Z****40V max XGT® Brushless
6" Angle Grinder Kit, with Electric Brake**

- Makita-built brushless motor along with 40V max XGT® Battery combine to deliver the power performance required for heavy-load application
- Active Feedback-sensing Technology (AFT®) turns the motor off if rotation of the wheel is suddenly forced to stop
- Electric brake stops the grinding or cut-off wheel in 2 seconds or less for maximum productivity
- Quick guard rotation allows easy tool-less adjustment for increased productivity

**GAG08Z****40V max XGT® Brushless 6" Paddle Switch
Angle Grinder Kit, with Electric Brake**

- Makita-built brushless motor along with 40V max XGT® Battery combine to deliver the power performance required for heavy-load application
- Active Feedback-sensing Technology (AFT®) turns the motor off if rotation of the wheel is suddenly forced to stop
- Electric brake stops the grinding or cut-off wheel in 2 seconds or less for maximum productivity
- Quick guard rotation allows easy tool-less adjustment for increased productivity



Also Available:
7" Dust Extraction Surface
Grinding Shroud (195386-6)

**GAG10M1 / GAG10Z****40V max XGT® Brushless 7" / 9" Paddle
Switch Angle Grinder Kit, with Electric Brake**

- Makita-built brushless motor along with a single 40V max XGT® Battery combine to deliver the power performance required for heavy-load application
- Electric brake stops the grinding or cut-off wheel in 2 seconds or less for maximum productivity
- Electronic current limiter helps protect the motor from overload in high torque application
- Automatic-start Wireless System (AWS™) utilizes Bluetooth® technology for wireless power-on/off communication between tool and dust extractor (AWS® Transmitter sold separately)

NEW SPRING RELEASE**GBPD1M1 / GBPD1Z****40V max XGT® Brushless
Deep Cut Portable Band Saw Kit**

- Makita-built brushless motor delivers up to 2X faster cutting
- Large 5" x 5" cutting Capacity; ideal for cutting multiple types of materials
- Built-in L.E.D. light illuminates the work area
- Anti-restart protection engineered to prevent motor start up when battery is inserted with switch locked on

NEW SPRING RELEASE**GSCD1M1 / GSCD1Z****40V max XGT® Brushless 7-1/4"
Metal Cutting Saw Kit, with Electric Brake and Chip Collector**

- Makita-built brushless motor delivers up to 2X faster cutting performance
- Large 2-5/8" cutting capacity
- Active Feedback-Sensing Technology (AFT®) electronically turns off the motor if rotation of bit is suddenly forced to stop
- Electric brake for maximum productivity

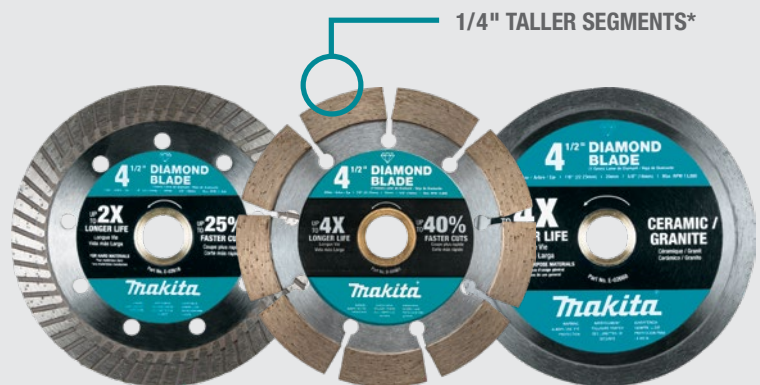
COMING SOON**GAG11M1 / GAG11Z****40V max XGT® Brushless 4-1/2" / 5"
X-Lock Angle Grinder Kit with Electric Brake****GAG13M1 / GAG13Z****40V max XGT® Brushless 4-1/2" / 5"
X-Lock Paddle Switch Angle Grinder
Kit with Electric Brake****DIAMOND BLADES**

UP TO **40% FASTER***

LAST UP TO **4X LONGER***

*Than competitor Diamond Blades

Full Range Available at: makitatools.com



TURBO
FOR AGGRESSIVE CUTS

SEGMENTED
FOR SMOOTH CUTS

CONTINUOUS
FOR PRECISE CUTS

Learn More at
makitatools.com/XGT



1/2" 4-SPEED IMPACT WRENCH

810 FT.LBS.
OF NUT-BUSTING TORQUE


GWT010 / GWT012

40V max XGT® Brushless 4-Speed High-Torque 3/4" Sq. Drive Impact Wrench Kit, with Friction Ring Anvil

- Makita-built brushless motor delivers 1,510 ft.lbs. of Nut-Busting Torque and 1,330 ft.lbs. of Fastening Torque; out powers similar models in heavy load applications
- 3 forward and 3 reverse Auto-Stop modes for increased efficiency
- Full speed mode function reduces trigger pull to reach full speed
- 4-speed power selection switch for a wide range of applications
- Flexible joint isolates the battery from the grip to help reduce wear on the battery contacts
- Dual L.E.D. lights; one below the anvil and one on the tools foot for added illumination in low light environments


GWT080 / GWT082

40V max XGT® Brushless 4-Speed Mid-Torque 1/2" Sq. Drive Impact Wrench Kit, with Detent Anvil

- Makita-built motor delivers 810 ft.lbs. of Nut-Busting Torque and 560 ft.lbs. of Fastening Torque
- 3 forward and 3 reverse Auto-Stop modes for increased efficiency
- Full speed mode function reduces trigger pull to reach full speed
- 4-speed power selection switch for a wide range of applications
- Flexible joint isolates the battery from the grip to help reduce wear on the battery contacts


GWT070 / GWT072

40V max XGT® Brushless 4-Speed Mid-Torque 1/2" Sq. Drive Impact Wrench Kit, with Friction Ring Anvil

- Makita-built motor delivers 810 ft.lbs. of Nut-Busting Torque and 560 ft.lbs. of Fastening Torque
- 3 forward and 3 reverse Auto-Stop modes for increased efficiency
- Full speed mode function reduces trigger pull to reach full speed
- 4-speed power selection switch for a wide range of applications
- Flexible joint isolates the battery from the grip to help reduce wear on the battery contacts


GWT040 / GWT042

40V max XGT® Brushless 4-Speed 1/2" Sq. Drive Impact Wrench Kit, with Friction Ring Anvil

- Makita-built brushless motor delivers 465 ft.lbs. of Nut-Busting Torque and 260 ft.lbs. of Fastening Torque
- 3 forward and 3 reverse Auto-Stop modes for increased efficiency
- Full speed mode function reduces trigger pull to reach full speed
- 4-speed power selection switch for a wide range of applications
- Compact length at only 5-5/8"; ideal for working in tight spaces
- Ultra-smooth variable speed trigger provides optimum control


GWT050 / GWT052

40V max XGT® Brushless 4-Speed 1/2" Sq. Drive Impact Wrench Kit, with Detent Anvil

- Makita-built brushless motor delivers 465 ft.lbs. of Nut-Busting Torque and 260 ft.lbs. of Fastening Torque
- 3 forward and 3 reverse Auto-Stop modes for increased efficiency
- Full speed mode function reduces trigger pull to reach full speed
- 4-speed power selection switch for a wide range of applications
- Compact length at only 5-5/8"; ideal for working in tight spaces
- Ultra-smooth variable speed trigger provides optimum control


GDT010 / GDT012

40V max XGT® Brushless 4-Speed Impact Driver Kit

- Makita-built brushless motor delivers 1,950 in.lbs. of Max Torque; out powers similar models in heavy load applications
- 3 forward and 3 reverse Auto-Stop modes for increased efficiency
- Additional one-touch 4-speed power selector button under the chuck for added convenience
- Two Tightening Modes (T-mode) for faster tightening of self-drilling screws in thick or thin gauge metal; helps prevent damage to the screw or workpiece
- Compact length at only 4-3/4"; ideal for working in tight spaces
- Ultra-smooth variable speed trigger provides optimum control

IMPACT SOCKETS



A-96372 // 14 Pc. 1/2" Drive Deep Well Impact Socket Set



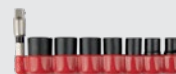
E-01672 // Impact XPS® 10 Pc. 3/8" Drive 6-Point SAE Impact Socket Set w/ Standard Socket Adapter



E-01703 // Impact XPS® 8 Pc. 1/4" Drive 6-Point SAE Impact Socket Set w/ Standard Socket Adapter



E-01688 // Impact XPS® 10 Pc. 3/8" Drive 6-Point Metric Impact Socket Set w/ Standard Socket Adapter



E-01694 // Impact XPS® 8 Pc. 1/4" Drive 6-Point Metric Impact Socket Set w/ Standard Socket Adapter

More Accessories Available at: makitatools.com

Learn More at
makitatools.com/XGT

1/2" HAMMER DRIVER-DRILL
MORE POWER
AND CONTROL



AFT™

GFD01D / GFD01Z**40V max XGT® Brushless
1/2" Driver-Drill Kit**

- Makita-built brushless motor delivers 1,250 in.lbs. of Max Torque; outpowers similar models in heavy load applications
- Electronic digital clutch accurately targets desired torque range (41 settings in low speed, 21 settings in high speed)
- XPT™ is engineered to provide increased dust and water resistance in harsh job site conditions
- Active Feedback-sensing Technology (AFT®) turns the motor off if rotation of the accessory is suddenly forced to stop
- Up to 35% faster drilling speed with 2 speed settings (0-650 & 0-2,600 RPM)
- Compact length at only 7-1/8"; ideal for working in tight spaces



AFT™

GPH01D / GPH01Z**40V max XGT® Brushless
1/2" Hammer Driver-Drill Kit**

- Makita-built brushless motor delivers 1,250 in.lbs. of Max Torque; outpowers similar models in heavy load applications
- Electronic digital clutch accurately targets desired torque range (41 settings in low speed, 21 settings in high speed)
- XPT™ is engineered to provide increased dust and water resistance in harsh job site conditions
- Active Feedback-sensing Technology (AFT®) turns the motor off if rotation of the accessory is suddenly forced to stop
- Up to 35% faster drilling speed with 2 speed settings (0-650 & 0-2,600 RPM) (0-9,750 & 0-39,000 BPM)*
- Compact length at only 7-1/8"; ideal for working in tight spaces

*Compared to XPH07

**GPH02D / GPH02Z****40V max XGT® Compact Brushless
1/2" Hammer Driver-Drill Kit**

- Makita-built brushless motor delivers 585 in.lbs. of Max Torque
- 2 speed settings (0-550 & 0-2,200 RPM) (0-8,250 & 0-33,000 BPM)
- Ultra-smooth variable speed trigger provides optimum control
- Compact length at only 7-1/8"; ideal for working in tight spaces
- XPT™ is engineered to provide increased dust and water resistance in harsh job site conditions

**GFD02D / GFD02Z****40V max XGT® Compact Brushless
1/2" Driver-Drill Kit**

- Makita-built brushless motor delivers 585 in.lbs. of Max Torque
- 2 speed settings (0-550 & 0-2,200 RPM)
- Ultra-smooth variable speed trigger provides optimum control
- Compact length at only 6-11/16"; ideal for working in tight spaces
- XPT™ is engineered to provide increased dust and water resistance in harsh job site conditions

**GADO1M1 / GADO1Z****40V max XGT® Brushless
1/2" Right Angle Drill Kit**

- Makita-built brushless motor with two speed, variable speed (0-400 RPM and 0-1,500 RPM) for maximum efficiency and a wide range of drilling applications
- Drills up to 6-1/4" holes with hole saws and 4-5/8" holes with self feed bits
- Built-in L.E.D light with pre glow and afterglow illuminates the work area
- XPT™ is engineered to provide increased dust and water resistance in harsh job site conditions

**GADO2M1 / GADO2Z****40V max XGT® Brushless
7/16" Hex Right Angle Drill Kit**

- Makita-built brushless motor with two speed, variable speed (0-400 RPM and 0-1,500 RPM) for maximum efficiency and a wide range of drilling applications
- Drills up to 6-1/4" holes with hole saws and 4-5/8" holes with self feed bits
- Uses 7/16" hex shank bits for drilling versatility
- Built-in L.E.D light with pre glow and afterglow illuminates the work area

**GT2000****40V max XGT® 2-Pc. Combo Kit****Includes:**

- 40V max XGT® Brushless 1/2" Hammer Driver-Drill (GPH01Z)
- 40V max XGT® Brushless 4-Speed Impact Driver (GDT01Z)
- (2) 40V max XGT® Lithium-Ion 2.5Ah Battery (BL4025)
- 40V max XGT® Lithium-Ion Rapid Optimum Charger (DC40RA)

**GT400M1D1****40V max XGT® 4-Pc. Combo Kit****Includes:**

- 40V max XGT® Brushless 1/2" Hammer Driver-Drill (GPH01Z)
- 40V max XGT® Brushless 4-Speed Impact Driver (GDT01Z)
- 40V max XGT® Brushless 7-1/4" Circular Saw Top Handle (GSH01Z)
- 40V max XGT® L.E.D. Flashlight (ML001G)
- 40V max XGT® Lithium-Ion 2.5Ah Battery (BL4025)
- 40V max XGT® Lithium-Ion 4.0Ah Battery (BL4040)
- 40V max XGT® Lithium-Ion Rapid Optimum Charger (DC40RA)

**GT401M1D1****40V max XGT® 4-Pc. Combo Kit****Includes:**

- 40V max XGT® Brushless 1/2" Hammer Driver-Drill (GPH01Z)
- 40V max XGT® Brushless 4-Speed Impact Driver (GDT01Z)
- 40V max XGT® Brushless 1-1/4" Reciprocating Saw (GRJ01Z)
- 40V max XGT® L.E.D. Flashlight (ML001G)
- 40V max XGT® Lithium-Ion 2.5Ah Battery (BL4025)
- 40V max XGT® Lithium-Ion 4.0Ah Battery (BL4040)
- 40V max XGT® Lithium-Ion Rapid Optimum Charger (DC40RA)

Learn More at
makitatools.com/XGT

17" STRING TRIMMER
POWER OF A 30_{cc}
GAS STRING TRIMMER





GRU01M1 / GRU01Z
40V max XGT® Brushless
15" String Trimmer Kit

- Makita-built outer rotor brushless motor delivers the power of a 25cc gas string trimmer
- Rapid load bump & feed trimmer head line loads in seconds with 3 easy steps: align, feed and twist
- Up to 1 hour of run time with 40V XGT® 4.0Ah battery
- Automatic Torque Drive Technology mode automatically shifts from 3,500-6,500 RPM for extended run time or added power

NEW SPRING RELEASE



GRU02M1 / GRU02Z
40V max XGT® Brushless
Brush Cutter Kit

- Makita-built brushless motor delivers the power of a 30cc gas brush cutter
- Bike handle design for improved grip and more ergonomic working position
- Steel drive shaft for less vibration and longer equipment life
- 9" steel 4 tooth brush cutter blade ideal for cutting grasses, shrubs and underwood
- Automatic Torque Drive Technology mode automatically shifts from 4,600-7,000 RPM for extended run time or added power

NEW SPRING RELEASE



GRU03M1 / GRU03Z
40V max XGT® Brushless
17" String Trimmer Kit

- Makita-built brushless motor delivers the power of a 30cc gas string trimmer
- Brush cutter debris shield and loop handle equipped with barrier bar for compatibility with brush cutter blades
- Steel drive shaft for less vibration and longer equipment life
- Rapid load bump & feed trimmer head line loads in seconds with 3 easy steps: align, feed and twist
- Automatic Torque Drive Technology mode automatically shifts from 4,600-7,000 RPM for extended run time or added power

NEW SPRING RELEASE



GRU04M1 / GRU04Z
40V max XGT® Brushless
17" String Trimmer Kit

- Makita-built brushless motor delivers the power of a 30cc gas string trimmer
- Narrow string trimmer guard for improved cutting visibility
- Steel drive shaft for less vibration and longer equipment life
- Rapid load bump & feed trimmer head line loads in seconds with 3 easy steps: align, feed and twist
- Automatic Torque Drive Technology mode automatically shifts from 4,000-6,000 RPM for extended run time or added power

GUX01JM1X1 / GUX01ZX1 / GUX01Z
40V max XGT® Brushless Couple Shaft Power
Head Kit, with 17" String Trimmer Attachment

- Makita-built brushless motor delivers power of 30cc gas string trimmer
- Up to 25% more power than gas couple shaft power head*
- 3-speed options (Low: 4,200 RPM, Medium: 6,000 RPM, High: 7,100 RPM) for power and run time management
- Variable speed trigger for controlled cutting speed
- Lever-Style Lock System allows for quick tool-less installation and replacement of attachments

*Compared to EX2650LH

COMPATIBLE WITH
**14 COUPLE SHAFT
ATTACHMENTS**



More Accessories Available at: makitatools.com/OPE



GHU01M1 / GHU01Z
40V max XGT® Brushless
24" Rough Cut Hedge Trimmer Kit

- Makita-built brushless motor delivers the power of a 22.7cc gas hedge trimmer
- 5-position rotating rear handle for increased comfort during vertical and angle trimming
- 24" dual action double-sided sharp-edged shear blade with curved 3-sided teeth provides optimal trimming for thick and hard branches
- Up to 3 hours of run time using a 40V max XGT® 4.0Ah battery
- Up to 33% more torque than gas for cutting thick branches

GHU02M1 / GHU02Z
40V max XGT® Brushless
24" Hedge Trimmer Kit

- Makita-built brushless motor delivers the power of a 22.7cc gas hedge trimmer
- 5-position rotating rear handle for increased comfort during vertical and angle trimming
- 24" dual action double-sided shear blade with 3-sided teeth for clean cuts
- Up to 6 hours of run time using a 40V max XGT® 4.0Ah battery
- Up to 16% more torque than gas for cutting thick branches

GHU03M1 / GHU03Z
40V max XGT® Brushless
30" Hedge Trimmer Kit

- Makita-built brushless motor delivers the power of a 22.7cc gas hedge trimmer
- 5-position rotating rear handle for increased comfort during vertical and angle trimming
- 30" dual action double-sided shear blade with 3-sided teeth for clean cuts
- Up to 4 hours of run time using a 40V max XGT® 4.0Ah battery
- Up to 16% more torque than gas for cutting thick branches

NEW SPRING RELEASE



GHU04M1 / GHU04Z
40V max XGT® Brushless
24" Single-Sided Hedge Trimmer Kit

- Makita-built brushless motor delivers the power of a 22.7cc gas hedge trimmer
- 24" single-sided shear blade for commercial jobs
- Bevel-tipped, curved 3-sided teeth easily catch and hold branches for clean cuts with reduced friction
- Up to 6 hours of run time using a 40V XGT® 4.0Ah battery
- Up to 13% more torque than gas for cutting thick branches

NEW SPRING RELEASE



GHU05M1 / GHU05Z
40V max XGT® Brushless
30" Single-Sided Hedge Trimmer Kit

- Makita-built brushless motor delivers the power of a 22.7cc gas hedge trimmer
- 30" single-sided shear blade for commercial jobs
- Bevel-tipped, curved 3-sided teeth easily catch and hold branches for clean cuts with reduced friction
- Up to 6 hours of run time using a 40V XGT® 4.0Ah battery
- Up to 13% more torque than gas for cutting thick branches

COMING SOON



GRU05PM / GRU05Z
80V max (40V max X2) XGT®
Brushless Brush Cutter Kit

Learn More at
makitatools.com/XGT

18" CHAIN SAW
POWER OF A 42_{cc}
GAS CHAIN SAW



GBU01M1 / GBU01Z

40V max XGT® Brushless Blower Kit

- Up to 44% more blowing force than a 24.5cc gas blower
- Makita-built brushless motor delivers up to 565 CFM and 143 MPH
- Turbo boost mode delivers 565 CFM for heavy debris
- Cruise control lever with variable speed trigger adjusts between 0 - 476 CFM for power and run time management
- 3-stage telescoping long nozzle for user convenience



GGU01M1 / GGU01Z

40V max XGT® Brushless Earth Auger Kit

- Makita-built brushless Motor delivers power of a 36cc gas earth auger
- Automatic Speed Change™ technology adjusts drill speed and torque during drilling
- Drill holes up to 8" wide and 41" deep (extension bar, auger bit and blades sold separately)
- 2 speed options (Low: 0-400 RPM, High: 0-1,500 RPM) for power and run time management
- XPT™ is engineered to provide increased dust and water resistance in harsh job site conditions
- High performance digging with even and consistent holes for landscaping, construction and soil sampling

*Auger Drill Bit Sold Separately

NEW SPRING RELEASE



AFT™

GAU01M1 / GAU01Z

40V max XGT® Brushless 10" Pole Saw Kit, 8' Length

- Makita-built brushless motor delivers the power of a 35cc gas pole saw
- Up to 30% faster than gas
- Up to 150 cuts in 4x4 cedar with 40V XGT® 4.0Ah battery
- 8 foot fixed length for extended reach
- Active Feedback-Sensing Technology (AFT™) electronically turns off the motor if rotation of the attachment is suddenly forced to stop

NEW SPRING RELEASE



AFT™

GAU02M1 / GAU02Z

40V max XGT® Brushless 10" Telescoping Pole Saw Kit, 13' Length

- Makita-built brushless motor delivers the power of a 35cc gas pole saw
- Up to 30% faster than gas
- Up to 150 cuts in 4x4 cedar with 40V XGT® 4.0Ah battery
- Telescoping shaft easily adjusts length from 9 ft. to 13 ft. allowing access to hard-to-reach branches
- Active Feedback-Sensing Technology (AFT™) electronically turns off the motor if rotation of the attachment is suddenly forced to stop

CONNECTX™

COMMERCIAL OUTPUT



HIGHER
CAPACITY



LONGER
RUN TIME



ULTIMATE
COMPATIBILITY



DURABLE
DESIGN

HIGH CAPACITY FOR LONGER RUN-TIME AND ALL-DAY WORK*



PDC1200A01

ConnectX™ 1,200Wh Portable Backpack Power Supply



191N62-4 40V max XGT® Adapter



*Expected run times may vary by product, application, and workday amount

COMING SOON



GCU05M1 / GCU05Z

40V max XGT® Brushless 16" Chain Saw Kit



GCU04T1 / GCU04Z

40V max XGT® Brushless 18" Chain Saw Kit



GCU06T1 / GCU06Z

40V max XGT® Brushless 18" Chain Saw Kit



GCU01M1 / GCU01Z

40V max XGT® Brushless 12" Top Handle Chain Saw Kit



GCU02M1 / GCU02Z

40V max XGT® Brushless 14" Top Handle Chain Saw Kit



GCU03M1 / GCU03Z

40V max XGT® Brushless 16" Top Handle Chain Saw Kit

Learn More at
makitatools.com/XGT

4-SPEED COMPACT VACUUM

OVER

**2X MORE
SUCTION POWER**

WITH 42 CFM & 84" STATIC WATER LIFT



G4001M1 / G4001R1 / G4001Z
40V max XGT® Brushless
4-Speed HEPA Filter Compact Vacuum Kit

- Over 2X more suction power with 42 CFM and 84" static water lift
- Bagless canister for quick debris disposal
- Efficient two stage HEPA filter captures 99.97% of particulates .3 microns and larger extending the life of the main filter
- Up to 128 minutes of run time using a 40V max XGT® 4.0Ah Battery
- Compact and ergonomic design for operator comfort

NEW SPRING RELEASE



G4002R1 / G4002Z
40V max XGT® Brushless
4-Speed Compact Vacuum Kit, w/ Dust Bag

- Over 2X more suction power with 42 CFM and 84" static water lift
- Accepts disposable paper or cloth dust bag for dust-free debris disposal
- Up to 64 minutes of run time using a 40V max XGT® 2.0Ah Battery
- Compact and ergonomic design for operator comfort

NEW SPRING RELEASE



G4001PM / G4001Z
40V max XGT® Brushless
2.1 Gallon Wet/Dry Dust Extractor/Vacuum Kit

- Wet and dry pickup for versatility of applications
- Over 2X more suction power with 148 CFM and 92" water lift
- 2X more run time with 2 bay battery system
- Equipped with anti-static hose (1-1/4" x 5-1/2"), aluminum telescoping wand and 11" floor nozzle for janitorial and construction applications

NEW SPRING RELEASE



G4002PMU / G4002ZU / G4002PMX / G4002ZX
40V max XGT® Brushless
2.1 Gallon HEPA Filter Dry Dust Extractor Kit, AWS®

- Auto-start Wireless System (AWS®) utilizes Bluetooth® technology for wireless power-on/off communication between tool and dust extractor
- Over 2X more suction power with 148 CFM and 92" water lift
- 2X more run time with 2 bay battery system
- Efficient three stage HEPA filtration system captures 99.97% of particulates .3 microns and larger

G4002PMX / G4002ZX are AWS® Capable
(Auto-Start Wireless Transmitter sold separately)

COMPACT VACUUM ATTACHMENTS

INCREASE FILTER LIFE

CAPTURE 90% OF DUST PARTICLES BEFORE ENTERING THE MAIN CANISTER / DUST BAG



191D72-1 // Black Cyclonic Vacuum Attachment w/ Lock

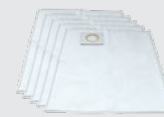


191D70-5 // White Cyclonic Vacuum Attachment w/ Lock

CANISTER VACUUM FILTER DUST BAGS

CONVENIENT DUST COLLECTION

EASIER CLEANUP AND QUICK DEBRIS DISPOSAL



A-48430 // Filter Dust Bag for 2.1 Gallon Canister Vacuum/Extractors, 5/pk



195557-5 // Filter Dust Bag for 4 Gallon Canister Vacuum/Extractors, 5/pk

AWS® CANISTER & BACKPACK MODELS

WIRELESS TOOL CONNECTION

UTILIZES BLUETOOTH® TECHNOLOGY FOR WIRELESS POWER-ON/OFF COMMUNICATION BETWEEN TOOL AND DUST EXTRACTOR



198901-5 // Auto-start Wireless Transmitter

COMING SOON



G4003R1 / G4003Z
40V max XGT® Brushless
Cyclonic Compact Vacuum Kit



G4003PM / G4003Z
40V max XGT® Brushless
4 Gallon Wet/Dry Dust Extractor/Vacuum Kit



G4004MUX / G4004ZUX
40V max XGT® Brushless
4 Gallon HEPA Filter Dry Dust Extractor Kit, AWS®

G4004PMX / G4004ZX are AWS® Capable
(Auto-Start Wireless Transmitter sold separately)



G4005T1X / G4005ZX
40V max XGT® Brushless
1/2 Gallon HEPA Filter Backpack Dry Vacuum Kit



G4006T1 / G4006Z
40V max XGT® Brushless
1/2 Gal. HEPA Filter Backpack Dust Extractor Kit, AWS® Capable

G4006T1 / G4006Z are AWS® Capable
(Auto-Start Wireless Transmitter sold separately)

Learn More at
makitatools.com/XGT



13" CORDLESS FAN

UP
TO

740 CFM
ON HIGH SETTING

**CF001GZ****40V max XGT® 9-1/4" Fan**

- Powerful motor delivers up to 290 CFM on high setting
- Up to 19 hours of continuous run time in Low speed with 40V max XGT® 4.0Ah Battery (battery not included)
- Three speed settings (High/Medium/Low) and Oscillation selector for optimal air velocity and control. Automatically oscillates 45° right and left
- Manually tilts 90° up and 45° down for convenient redirection of airflow

**CF002GZ****40V max XGT® 13" Fan**

- Powerful motor delivers up to 740 CFM on high setting
- Up to 17 hours of continuous run time in Low speed with 40V max XGT® 4.0Ah Battery (battery not included)
- Three speed settings (High/Medium/Low) and Oscillation selector for optimal air velocity and control. Automatically oscillates 45° right and left
- Quiet operation at 52 dBA

**GRM01****40V max XGT® Job Site Radio**

- Menu controls to set AM/FM, mono/stereo, clock settings, volume, and snooze
- One auxiliary port for MP3 compatibility and one USB port for charging your mobile device
- Delivers rich, full stereo sound from two powerful 3.5" side-firing speakers
- Compatible with 12V max CXT®, 18V LXT®, and 40V max XGT® batteries

**GRM02****40V max XGT® Bluetooth® Job Site Radio**

- Equipped with Bluetooth® to wirelessly connect your mobile device to play music
- Menu controls to set FM mono/stereo, clock settings, volume and snooze
- One auxiliary port for MP3 compatibility and one USB port for charging your mobile device
- Delivers rich, full stereo sound from two powerful 3.5" side-firing speakers

**GRM03****40V max XGT® Premium Bluetooth® Job Site Radio**

- Premium sound quality for an enhanced audio experience
- Equipped with Bluetooth® to wirelessly connect your mobile device to play music
- Menu controls to set FM mono/stereo, clock settings, volume and snooze
- One auxiliary port for MP3 compatibility and one USB port for charging your mobile device

**M1001G****40V max XGT® L.E.D. Flashlight**

- 34 hours run time using BL4025; 55 hours run time using BL4040
- High-luminance 4 L.E.D. flashlight provides 160 lumens
- 170° pivoting head with 12 positive stops

**M1002G****40V max XGT® L.E.D. Lantern/Flashlight**

- 32 hours run time using BL4025; 51 hours runtime using BL4040
- 3 stage brightness for accurately positioned illumination
- Built-in USB port for charging portable electronic devices
- 360° lantern mode provides 710 lumens; 180° lantern mode provides 340 lumens; flashlight mode provides 130 lumens

**M1006G****40V max XGT® 18 L.E.D. Flashlight**

- High-luminance 18 L.E.D. flashlight provides 500 lumens on high
- 3-mode operation: delivers 500 lumens on High, 250 lumens on Medium, and 100 lumens on Low
- Flashlight head folds up and down with 7 positive stops and rotates left to right for multiple lighting angles
- Up to 82 hours of illumination with 4.0Ah 40V max XGT® Battery (battery sold separately)

**M1003G****40V max XGT® Flood Light**

- 2-mode operation: delivers 1,100 lumens on High and 450 lumens on Low
- Up to 22 hour of run time using BL4040
- Compatible with Makita® 40V max XGT® and 18V LXT® batteries
- Dust and water-resistant construction (IP65 rated) for improved operation in harsh job site conditions

**MP001GZ01****40V max XGT® High-Pressure Inflator**

- Powerful high volume pump for faster inflation, delivers up to 160 PSI
- Easily inflates vehicle tires, bicycle tires, sports balls, and more
- Auto-stop function automatically stops inflation when preset air pressure is reached to prevent overfill

**ADP001G****40V max XGT® Power Source**

- 2 USB ports provide quick and easy charging
- 2.4A output from each USB port, 4.8A total output when both USB ports are connected
- Auto-off turns off the USB output power after 30 minutes
- L.E.D. on/off button turns green while in use for operator convenience

COMING SOON**M1005G****40V max XGT® L.E.D. Work Light****M1007G****40V max XGT® L.E.D. Flashlight/Spotlight**

NEW SPRING RELEASE



GSA01Z

40V max XGT® Brushless High Speed Dust Blower

- Makita-built brushless motor delivers up to 447 MPH and 39 CFM
- 4 digitally controlled speeds for a wide range of applications
- 5 nozzles included for a wide range of applications
- Up to 50 minutes of run time with 40V XGT® 2.5Ah battery

NEW SPRING RELEASE



GTR01D1 / GTR01Z

40V max XGT® Brushless Compact Router Kit

- Makita-built brushless motor delivers up to 1.5 HP
- Variable speed control dial (10,000 - 31,000 RPM) to match the speed to the application
- Electronic speed control maintains constant speed under load
- On/Off button with separate lock button

NEW SPRING RELEASE



GTP01D1/GTP01Z

40V max XGT® Brushless 23 Gauge Pin Nailer Kit

- Makita-built brushless motor delivers up to 15% faster firing
- Refined firing mechanism reduces recoil; reduces force required on the work surface when driving pin nails
- Max magazine capacity up to 120 pin nails
- Narrow nose design allows easy nailing access in confined areas

NEW SPRING RELEASE



GVP01M1 / GVP01Z

40V max XGT® Brushless 7" Polisher/Sander Kit

- Cordless solution for a variety of polishing applications where mobility is important
- Variable speed dial and trigger (0-2,200 RPM) enables user to match the speed to the application
- Rubberized over molding on the tool and battery position are designed to help protect delicate surfaces from potential damage
- Weighs only 7.7 lbs. with battery for reduced operator fatigue

COMING SOON



GPK01M1 / GPK01Z

40V max XGT® Brushless Planer Kit

MORE VOLTAGE

IN THE PREFERRED 18V FORM FACTOR



FASTER CHARGING
TO GET WORK DONE FASTER

2.5Ah 28 MIN

4.0Ah 45 MIN

5.0Ah 50 MIN

HIGHER OUTPUT POWER
~25% LONGER RUN TIME



50 Minute Charge Time

BL4050F

40V max XGT® Lithium-Ion 5.0Ah Battery

- Reaches full charge in 50 minutes
- Enhanced cooling system is engineered to maximize battery life
- XGT® Batteries features an advanced design impact-resistant outer case
- and shock-absorbing inner-liner engineered to protect the battery in harsh jobsite environments
- The digital communication within XGT® optimizes performance to provide up to 2X longer sustained power under heavy-load applications



45 Minute Charge Time

BL4040

40V max XGT® Lithium-Ion 4.0Ah Battery

- Reaches full charge in 45 minutes
- XGT® Batteries features an advanced design impact-resistant outer case
- and shock-absorbing inner-liner engineered to protect the battery in harsh jobsite environments
- The digital communication within XGT® optimizes performance to provide up to 2X longer sustained power under heavy-load applications



28 Minute Charge Time

BL4025

40V max XGT® Lithium-Ion 2.5Ah Battery

- Reaches full charge in 28 minutes
- XGT® Batteries features an advanced design impact-resistant outer case
- and shock-absorbing inner-liner engineered to protect the battery in harsh jobsite environments
- The digital communication within XGT® optimizes performance to provide up to 2X longer sustained power under heavy-load applications



DC40RA

40V max XGT® Lithium-Ion Rapid Optimum Charger

- The XGT® Rapid Charger with dual-fan design circulates air through the battery to cool the battery and circuit board quickly for faster charging
- The XGT® Rapid Charger's built-in chip thoroughly communicates during the charging process to control current, voltage, and temperature for more efficient charging
- The XGT® Rapid Charger's digital display indicates battery charge level (-80%, +80%, 100%)



DC40RB

40V max XGT® Dual Port Rapid Optimum Charger

- The XGT® Rapid Charger with three fan design circulates cooling air through the batteries and circuit board quickly for faster charging
- The XGT® Rapid Charger's built-in chip thoroughly communicates during the charging process to control current, voltage, and temperature for more efficient charging
- The XGT® Rapid Charger's digital display indicates battery charge level (-80%, +80%, 100%)



ADP10

40V max XGT® to 18V LXT® Adapter for DC40RA Charger

- Adapts 40V max XGT® Chargers to charge 18V LXT® Batteries (batteries not included)
- Charges an 18V LXT® Lithium-Ion 6.0Ah Battery in only 40 minutes
- Charges an 18V LXT® Compact Lithium-Ion 2.0Ah Battery in only 24 minutes

COMING SOON



76 Minute Charge Time

BL4080F

40V max XGT® Lithium-Ion 8.0Ah Battery

HIGHER OUTPUT POWER
UP TO 2X LONGER RUN TIME

COMPATIBILITY

CHARGES BOTH XGT® & LXT® BATTERIES



Use adapter ADP10 with charger DC40RA to rapid charge 18V LXT® Batteries.



BEYOND LIMITS®

40V | 80V max



The MAKITA® TEAL COLOR is the trade dress of Makita Corporation and is protected under common law and registered with the U.S. Patent and Trademark Office. Printed in U.S.A. 999BR051 XGT-0322-9,750 MA-11189-22